

Babine Lake WSG
Inlet Streams to Babine Lake
Sub-basins I and V
(480)Houston Forest Products Co.
Morice Forest District
Morrison Operating Area
1999

NAD 83 TRIM 1994

SCALE 1 : 20000

1 cm = 200 metres

Date Drawn: 2000/05/04

Drawn By: Western Geographic Information Systems Inc.

Stream Information Summary

Watershed code	Waterbody Identifier
Reach break	Sample site location
Stream anomaly	Fishbearing streams
Support fishbearing streams	Support non-fishbearing streams
Non-fishbearing streams	No defined channel
Physical Characteristics	Enhancement/Management Activities
persistent debris accumulation	hatchery
dam	fishway
falls	incubation box
alluvial fan	bridge
talus fan	weir
slump	marsh or swamp
eroded bank	groundwater flow direction
dewatering	marsh or swamp
canyon	spring
sub-surface flow	
counting fence	side channel
spawning channel	general crossing
fisheries sensitive zone	

Feature Summary Symbol

Feature symbol	Height	Length
	150	150

(Note: Not all features are associated with height and/or length measurements.)

Reach Summary Symbol

S-FC-3-IR	Space (S) or Wetland (W)	Confinement	Gradient	Pattern
-----------	--------------------------	-------------	----------	---------

Stream Summary Symbol

Fish code(s)	Site Gradient	Width	Morphology	Substrate	Distance
CO DV RB	2-12-RP	C3	C4	C5	C6

(Note: Historic sample sites do not have stream summary symbols. Contact HSLP for the associated historic data.)

Lake Summary Symbol

Lake (L) or Wetland (W)	pH	Lake Area	TDS	Conductivity
L-175-6-8-29	20-15	CAS	CO	DV

Fish code(s)

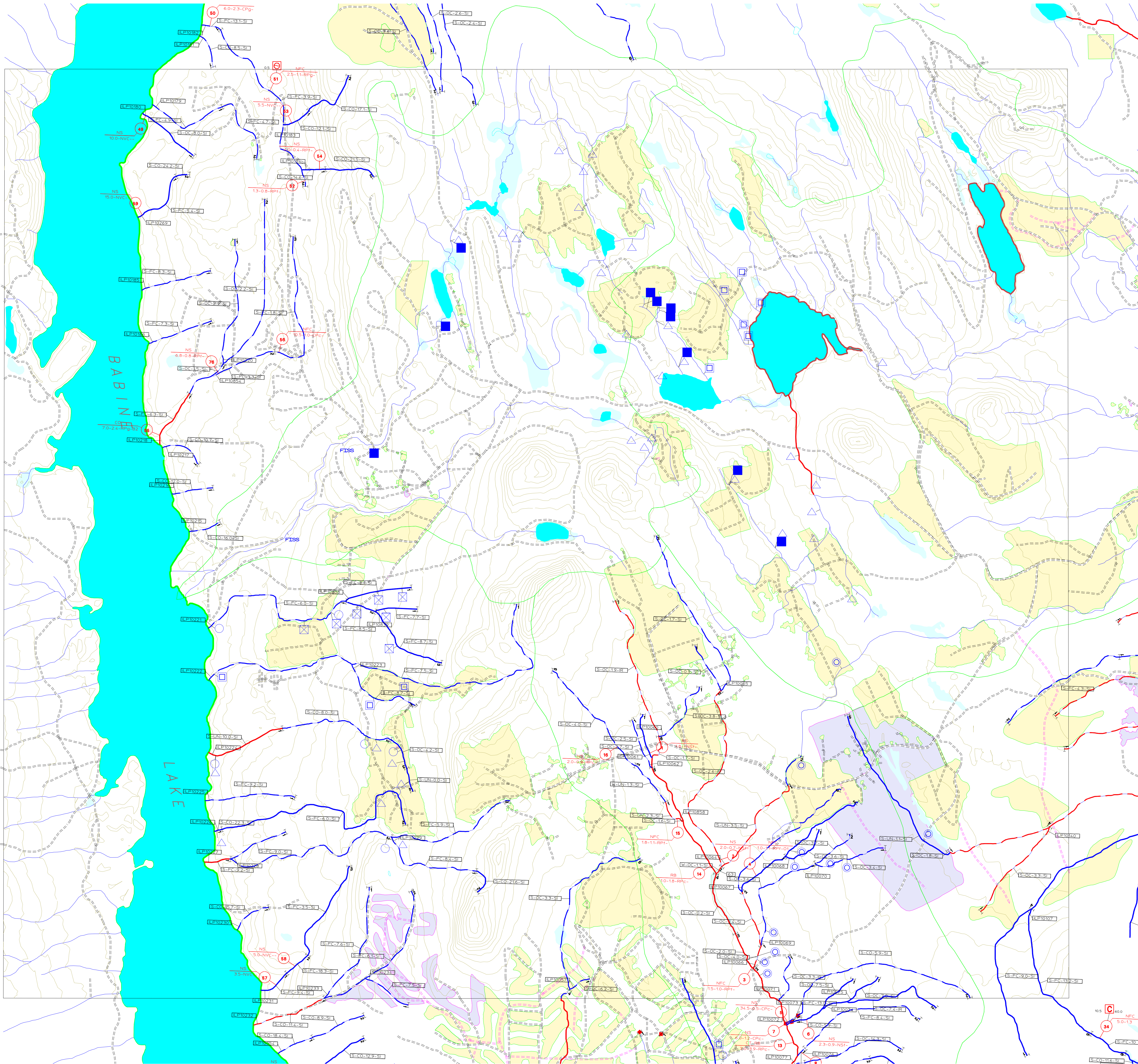
Other Features

Lake	Wetland	Existing blocks	Proposed blocks	Watershed boundary	Sub-watershed boundary	River or stream	Contour	Existing roads	Proposed roads
------	---------	-----------------	-----------------	--------------------	------------------------	-----------------	---------	----------------	----------------

Code	Common Name	Code	Common Name
○	Unpublished species	MW	Mountain Whitefish
CO	Coho Salmon	NPC	No fish captured
CSU	Largemouth Sucker	NS	Not sampled
CT	Cutthroat Trout	NSC	Northern Squawfish
DV	Dolly Varden	PCC	Peanouth Chub
LKC	Lake Chub	RB	Rainbow Trout
LNC	Longnose Dace	RSC	Redside Shiner
LSU	Longnose Sucker		

BASE: _____ TR: _____ STR SYM: INV _____
LOC: _____ EDE: _____ LK SYM: INV _____
HAB: _____ INV: _____
FISH: _____
DATE INV: 1999/09/01 INV MGMT: OTH _____

The Province has not accepted the contents of this product for the purposes of the Forest Practice Code, and reserves the right to dispute the validity of the information contained herein. The Province does not necessarily agree with the classification assigned to any individual stream reach, for use in logging plans, silvicultural prescriptions or for any other application.



Historic Information Summary

FIS: Federal/Provincial Fish Habitat Inventory and Information Program. 1998. Fisheries Information Summary System Maps. Cited as FIS.

SKR Consultants Ltd. 1996a. Stream classification at selected planned harvest areas in the Morice Forest District: CP 051-2, CP 071-1 and 2, CP 610-1 and 3, CP 560-4, CP 572-2 and 3, CP 453-2, CP 438-1 and 5. Unpublished report prepared for Houston Forest Products Co., Houston, B.C.

SKR Consultants Ltd. 1996b. Stream classification at selected sites in the Tahlo Creek area: CP 585-1 and CP 585-2. Unpublished report prepared for Houston Forest Products Co., Houston, B.C.

SKR Consultants Ltd. 1997. Aquatic stream inventory in the Morrison IRM Unit: CP 527-1, CP 535-3, CP 540-1, CP 540-2, CP 541-3, CP 555-1, CP 555-2, CP 555-3. Unpublished report prepared for Houston Forest Products Co., Houston, B.C.

SKR Consultants Ltd. 1998a. Fish and fish habitat inventory for operational areas in the Morrison Landscape Unit: CP 577-1 and the CP 586 access road. Unpublished report prepared for Houston Forest Products Co., Houston, B.C.

SKR Consultants Ltd. 1998b. Fish and fish habitat inventory for operational areas in the Morrison Landscape Unit: CP 529-1, 2, 3 & 4, 3000 Road Extension and West Arm of 3000 Road. Unpublished report prepared for Houston Forest Products Co., Houston, B.C.

SKR Consultants Ltd. 1998c. Fish and fish habitat inventory for operational areas in the Morrison Landscape Unit: CP 533-1 to 10, CP 539-2 to 6, CP 539-8, and CP 541-2. Unpublished report prepared for Houston Forest Products Co., Houston, B.C.

SKR Consultants Ltd. 1998d. Fish and fish habitat inventory for operational areas in the Morrison Landscape Unit: CP 577-1 and the CP 586 access road. Unpublished report prepared for Houston Forest Products Co., Houston, B.C.

SKR Consultants Ltd. 1998e. Letter to Jaret van der Giessen (Houston Forest Products Co.) dated January 13, 1998 regarding: Results for stream inventory and classification for CP 562-2 access road in the Morrison IRM Unit. Letter prepared for Houston Forest Products Co., Houston, B.C.

SKR Consultants Ltd. 1998f. Letter to Jaret van der Giessen (Houston Forest Products Co.) dated January 23, 1998 regarding: Results for stream inventory and classification for CP 541-1 in the Morrison IRM Unit. Letter prepared for Houston Forest Products Co., Houston, B.C.

SKR Consultants Ltd. 1999a. Operational fish and fish habitat inventory in inlet streams to Babine Lake: CP 527-1, CP 527-4, CP 528-3, CP 528-2, CP 529-2, CP 541-1, CP 541-3. Unpublished report prepared for Houston Forest Products Co., Houston, B.C.

SKR Consultants Ltd. 1999b. Operational fish and fish habitat inventory of inlet streams to Babine Lake: CP 505-1 and CP 546-1. Unpublished report prepared for Houston Forest Products Co., Houston, B.C.

SKR Consultants Ltd. 1999c. Letter to Jaret van der Giessen (Houston Forest Products Co.) dated October 12, 1999 regarding: Stream classification for streams in and adjacent to CP 505-1 in the Morrison Landscape Unit. Letter prepared for Houston Forest Products Co., Houston, B.C.

SKR Consultants Ltd. 1999d. Operational fish and fish habitat inventory of inlet streams to Tahlo Creek: CP 586-3. Unpublished report prepared for Houston Forest Products Co., Houston, B.C.

SKR Consultants Ltd. 1999e. Operational stream inventory of selected inlet streams to Morrison Lake. Streams in and adjacent to CP 523-3 and CP 563-3 in the Morrison Landscape Unit. Unpublished report prepared for Houston Forest Products Co., Houston, B.C.

SKR Consultants Ltd. 1999f. Operational stream inventory of selected tributaries to Tahlo Creek. Sampling of streams crossed by the proposed extension of Tahlo Main in the Morrison Landscape Unit. Unpublished report prepared for Houston Forest Products Co., Houston, B.C.